



The Anacapri

Find your space
IN THE MOST VIBRANT CITY BLOCK
Within the Anacapri

The Anacapri is in harmony with its surroundings—inspired by the spirit of togetherness, in touch with the natural environment and embracing the comfort of home.

A place to call home in one of the city's most vibrant neighbourhoods within just minutes is myriad everyday conveniences, community amenities and recreational opportunities—indoors and outdoors



DEVELOPED BY



Local premier developer focusing on creating diverse masterplan communities. With 20 years of experience in advanced comprehensive real estate industry in Canada.





The Anacapri is the ultimate expression of holistic living, a one-of-a-kind community made up of smartly designed residences ranging from studios and 1, 2, and 3-bedroom units.

LOCAL HIGHLIGHTS FOR EASY LIVING

Nearby shopping hubs include Gateway Plaza, Landmark District and Capri Center, Kelowna's top restaurants, parks, shopping and more. You'll never run out of local gems, from fresh food to trendy boutiques to fun and games.



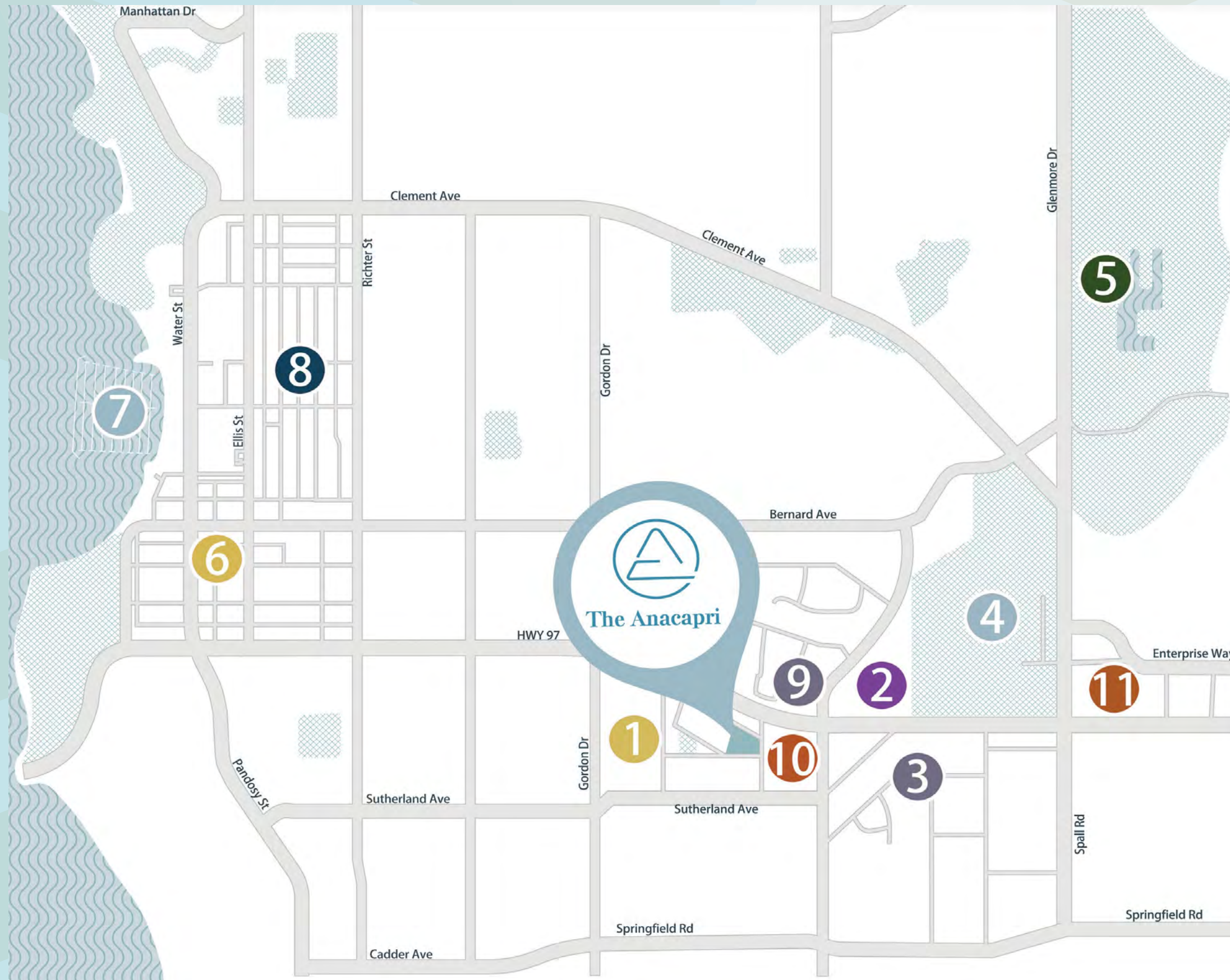
The Anacapri

INSPIRED LIVING REIMAGINED

Kelowna's Landmark district has so much to explore – from healthy eateries to coffee shops to local boutiques. An easy distance to work for many, living at Anacapri means more access to the lifestyle you love. The area offers natural beauty and urban parks, including Parkinson Recreation Centre and Mission Creek Park, a nearby golf course and 24-hour gyms, affording residents of The Anacapri a healthy, balanced lifestyle.



NEIGHBORHOOD



1. CAPRI CENTRE

Ricky's All Day Grill
Starbucks
Mekong Restaurant
Dairy Queen Grill & Chill
Booster Juice
Fatburger Kelowna
De Dutch
Mi-Ne Sushi House
The Old Spaghetti Factory
Vintner's Grill
Pacific Top Team Martial Arts
Capri Bowling Lanes
GoodLife Fitness
Kelowna Denture Clinic
Pharmasave
Gordon Drive
Loblaw pharmacy
Namaste Day Spa
Beyond Wrapture Day Spa
CapriCMW Insurance Services
Peter's Your Independent Grocer
Cap's Liquor Store

2. GATEWAY PLAZA

Browns Socialhouse
Harvey Dakodas Pub
OneZo TapiocaGlobal Fitness & Racquet Centre
30 Minute Hit
RachaWadee Thai Massage & Spa
Top Fashion Hair Design
Maria's Hair Fashions
Waxcetera
Wentworth Music Education Centre

3. LANDMARK DISTRICT

Landmark Office Buildings
Third Space Cafe
Bean Scene Coffee Works
Frankie We Salute You
Copper Brewing Company
Mon Thong Thai Food
Kasai Teppanyaki Steak & Sushi
Buster's Pizza & Donair
Fiesta Del Sol
Limey, The British Shop
Ok Corral Liquor Store
Redline Cycle
Centre for Arts and Technology
Valeo Health Clinic

4. PARKINSON RECREATION CENTRE

Apple Bowl Stadium
Parkinson Recreation Tennis Courts
Parkinson Activity Centre

5. KELOWNA GOLF & COUNTRY CLUB

6. DOWNTOWN KELOWNA & WATERFRONT

7. KELOWNA YACHT CLUB

8. UBC OKANAGAN (DOWNTOWN KELOWNA)

9. BURTCH PLAZA

Ume Foods
K-Town Pizzeria
BCAA
uBreakiFix
Dollarama
Black & Lee

10. CENTRE 97

Domino's Pizza
Shady Rest Fish & Chips
Burtch Animal Hospital
Club Pilates
F45 Training Kelowna
Bulk Barn
Dollar Tree
Valoroso Foods

11. SPALL PLAZA

IHOP
O-Zeki Japanese Restaurant
The Placery Bistro and Bar
Baxter's Bar & Grill
London Drugs
Warehouse One
Premium Label Outlet
The Shoe Companvwwwyy
Toys'R'Us
Choices Markets
Fisherman's Market
Big Box Outlet Store





PURPOSEFULLY GREEN

Beautifully landscaped, quiet, private places away from it all with spectacular views in all directions, and plenty of space for peaceful moments. The large balcony extend your living space to the outdoors and enhance your quality of life.



New Aesthetic

The Anacapri is a precision-driven architecture designed by renowned Pacific West Architecture and brought to life by Kingdom Property. At the Anacapri, thoughtful design philosophy is woven into the project at all levels and in every detail. The Anacapri gives you the freedom to live however you want, whenever you want.

Amazing Amenities

The amenities at The Anacapri aren't limited to the great outdoors. Inside are several spaces that make healthy living and socializing a breeze. The highlight is a modern fitness facility featuring cardio and strength-training equipment to help you get your heart rate up when the weather outside is less than ideal. Multiple use social lounge for dining, study and co-working. Smart parcel delivery system brought to you by Bluemyth Technology.





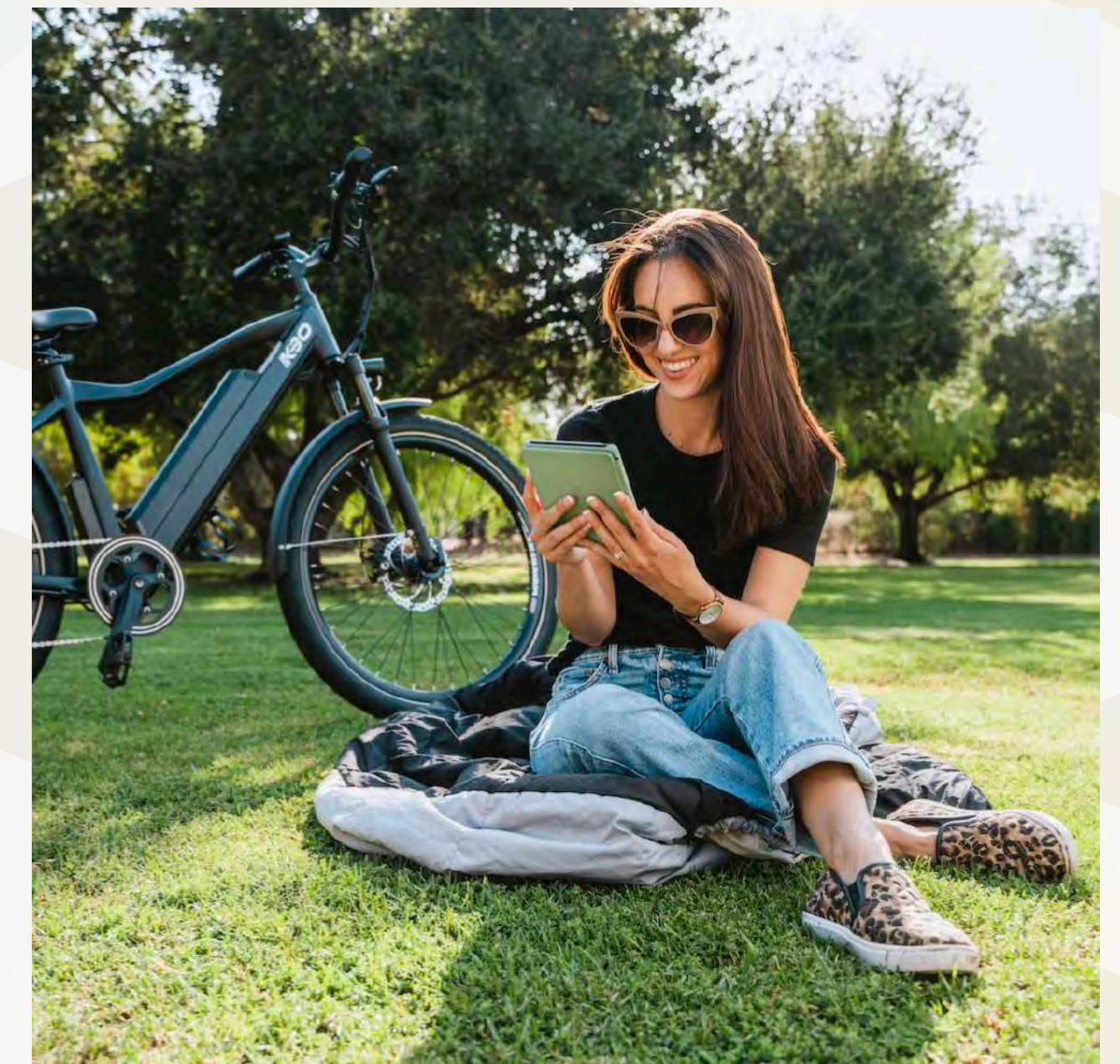


SMART HOME TECHNOLOGY

The Anacapri's resident amenities reimaged modern living with smart home technology – from door locks to temperature. While you're home, you can also enjoy the multi-functional, community lounge and gym, along with the safety and peace of mind by common-area security monitoring and BlueBox Smart Parcel Solution.

Fuel-Free Lifestyle

Selected parking stalls are EV charging ready, also empowered by one spot of Modo Carshare & EV charging station at visitor parking. Bike storage is also available for residences.







LIVING REFINED - Home with ten and nine-foot ceilings with natural light that fills the area from oversized windows.

Dark – Space Grey



Homes are offered in a choice of two palettes. This Ivory Oak is a rich, warm alternative to the light,.

Light – Ivory Oak

Modern Functional Design

Each studio, 1, 2, and 3-bedroom unit shares modern design features with elegant lines and natural tones in your choice of Ivory Oak or Space Grey details. An open concept layout with stainless steel appliances and luxury quartz countertops creates a bright and inviting space made for inspired living.



SPACE
GRAY

IVORY
OAK



Material Boards

FEATURES & FINISHES

BALANCED LIVING

URBAN VIBRANCY & INNER TRANQUILLITY

- Morden and inviting architecture, thoughtful interior design.
- The livable floor plans are harmoniously designed for modern living, featuring outdoor spaces for every home.
- Easy and green access to work and plays in the neighbourhood.
- Smart home features lead the generation of home technology.

MORDEM INTERIORS

AN INSPIRED URBAN ENCLAVE

- Two designer colour schemes featuring soft and inviting palettes.
- Generous balconies blend indoor-outdoor living
- Large window fill your home with natural light
- Airy ~9’ ceilings (Level one homes feature ~10’ ceilings)
- Elegant and durable Vinyl flooring throughout
- Energy Recovery Ventilation Systems make sure you always enjoy the fresh air
- Contemporary white blinds on all exterior windows
- Frost glass room dividers add privacy and sunlight for 1 Bed suites
- Spacious in-suite storage spaces upon unit entry in selected suites
- Pantry closet for selected suites
- Split-system Air Conditioning, and baseboard heating

FUEL-FREE LIFESTYLE

A GREEN COMMUTER

- Energized EV-ready parking available for upgrades
- Charging station provided at visitor parking stalls
- One EV Car-share stall & share car by Modo
- Bike racks available for all suites with the option to purchase secured locker

SPA-INSPIRED BATHROOMS

A PRIVATE RETREAT

- Unwind in Luxurious bathrooms that combine relaxing comfort with enduring style.
- Spacious Vanities with surface-mount medicine cabinets offering extra room for personal storage
- High-end quartz countertops in pure white
- Under-mount sinks finished with chrome plumbing fixtures
- Water-saving, dual-flush toilets.
- Attractive acrylic bathtubs with white subway tile finishings
- Chrome single-handle bathroom faucets
- Choice of White or Sand tile flooring

GOURMET KITCHENS

HEART OF EVERY HOME

- Two colour combinations in kitchens with a sizable single bowl under mount sink with contemporary, single-lever, dark brushed nickel and pull-down kitchen faucet.
- Recessed LED ceiling lights and LED puck light under cabinet lights creates bright and practical workspace.
- Beautiful and durable engineered quartz countertops and backsplash in a brilliant white finish.
- Fully equipped appliances for a seamless and clean look.

ENVIABLE APPLIANCES

MORDEN AND DURABLE

- Full-size front-load Samsung washer and dryer
- GE integrated dish washer
- For 2 Bed and 3 Bed units
 - 28” W Fulgor Milano Fridge
 - 30” W GE Stainless Steel Electric Range Stove-Top
 - 30” W Sleek Panasonic Over-The-Range Microwave
- For the Bachelor, 1 Bed and Junior 2 Bed units:
 - 24” W Fulgor Milano Fridge
 - 24” W GE Stainless Steel Electric Range Stove-Top
 - 24” W Sleek Panasonic Over-The-Range Microwave

AMAZING AMENITIES

REST AND RECHARGE

- A fully-equipped fitness centre, including cardio machines, weight training zone, stretching area.
- Social lounge for multiple uses, featuring a dining table, electric fireplace and study area.
- Secured mailroom and smart parcel delivery system for your online orders.
- A bike repair stand and dedicated car wash stall
- Bike/pet washing stations at courtyard entrance
- Public patio & community garden

SMART LIVING

LEAD-GENERATION HOME TECHNOLOGY

- Fully integrated Smart Home technology
- Smart door lock with passcode entry and phone lock functionality
- Seamless control for baseboard heating and AC. The system supports Apple HomeKit™, Google Assistant™, and Amazon Alexa™
- Get the gift of Google Nest Hub (2nd Generation) in welcome package.
- All compatible with iOS and Android phones and tablets

THOUGHTFUL TOUCHES

FOR PEACE OF MIND

- Heated parkade designed for comfort in every season
- Widened hallways and passage doors for ease of access
- Hard wired smoke detector, fire sprinklers and carbon monoxide monitoring systems ensure resident safety
- Camera-monitored garage gates for safe vehicle access
- Secure FOB access control system
- Secured underground parking and storage
- 2-5-10 Year Home Warranty Insurance and Deposit Insurance by Travelers

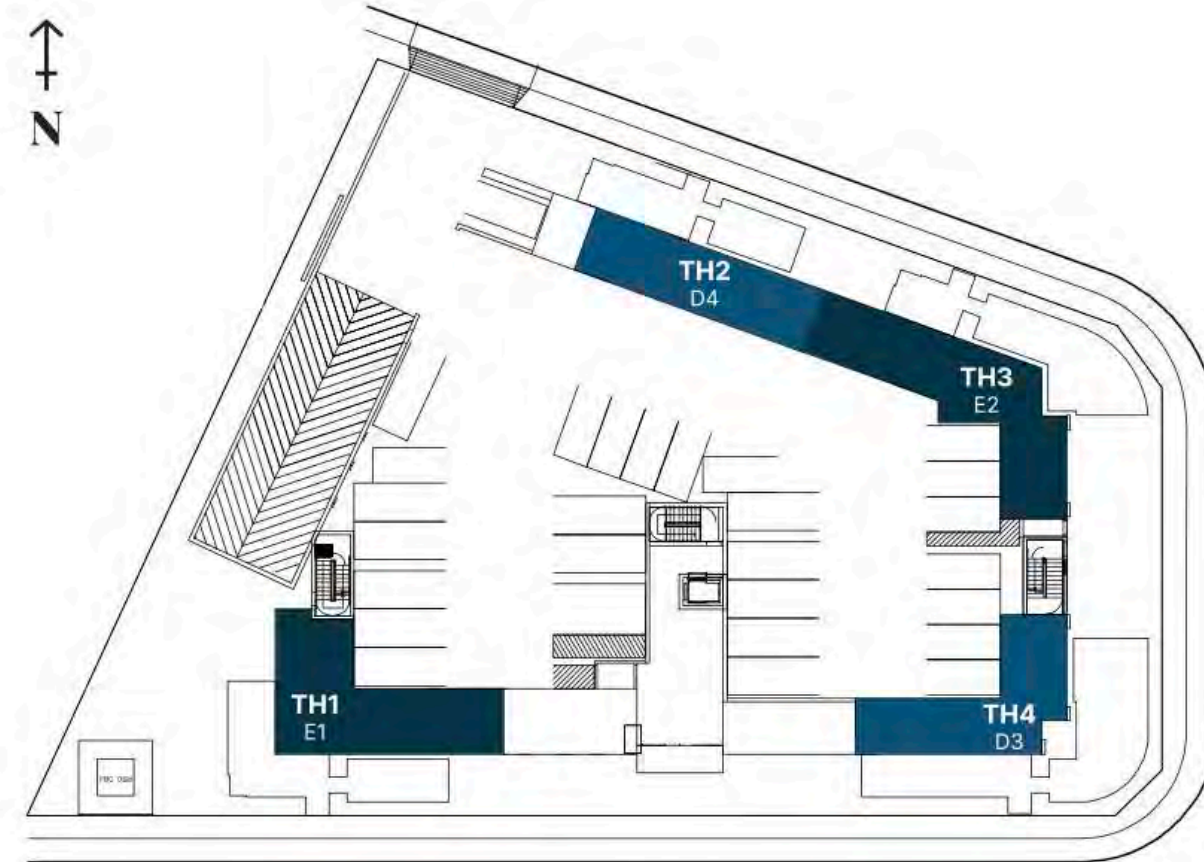


STUDIO

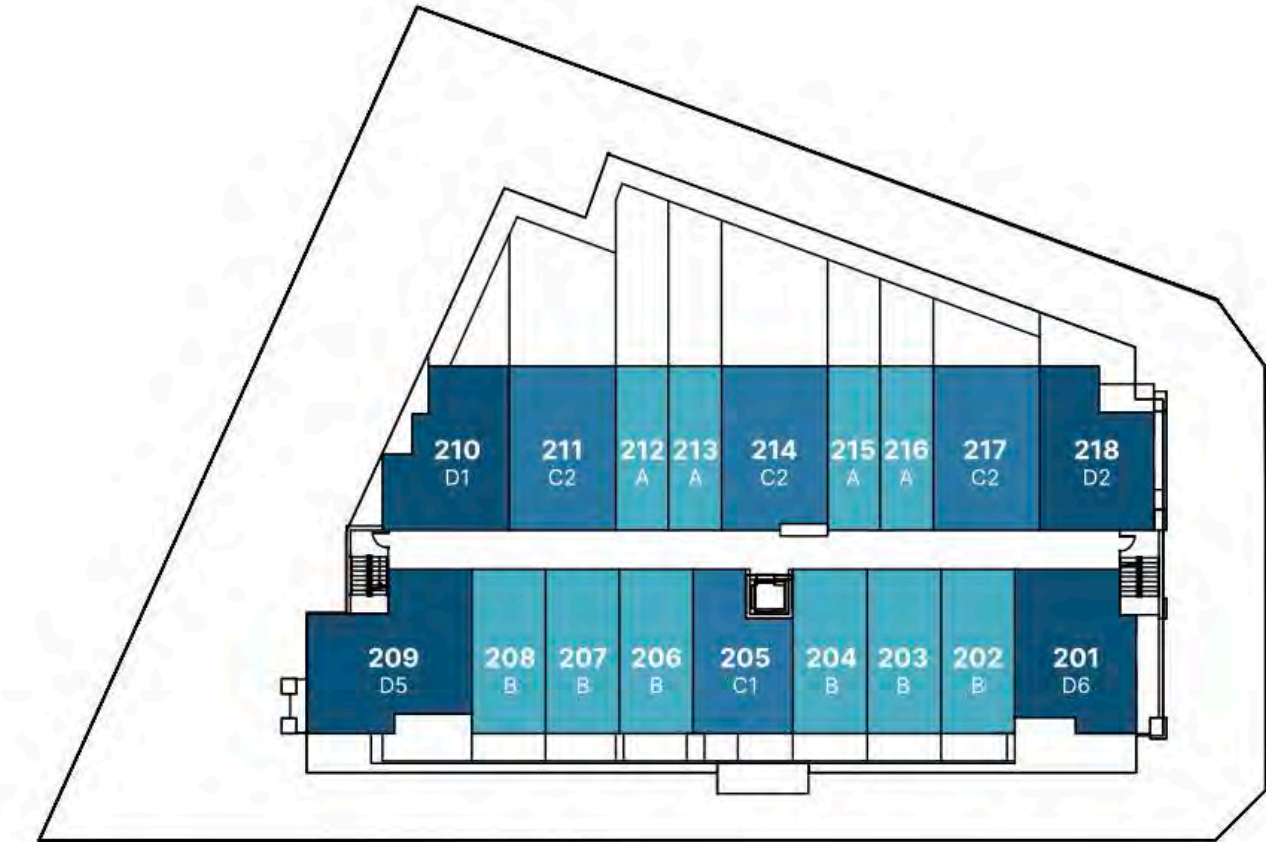
1 BEDROOM

2 BEDROOM

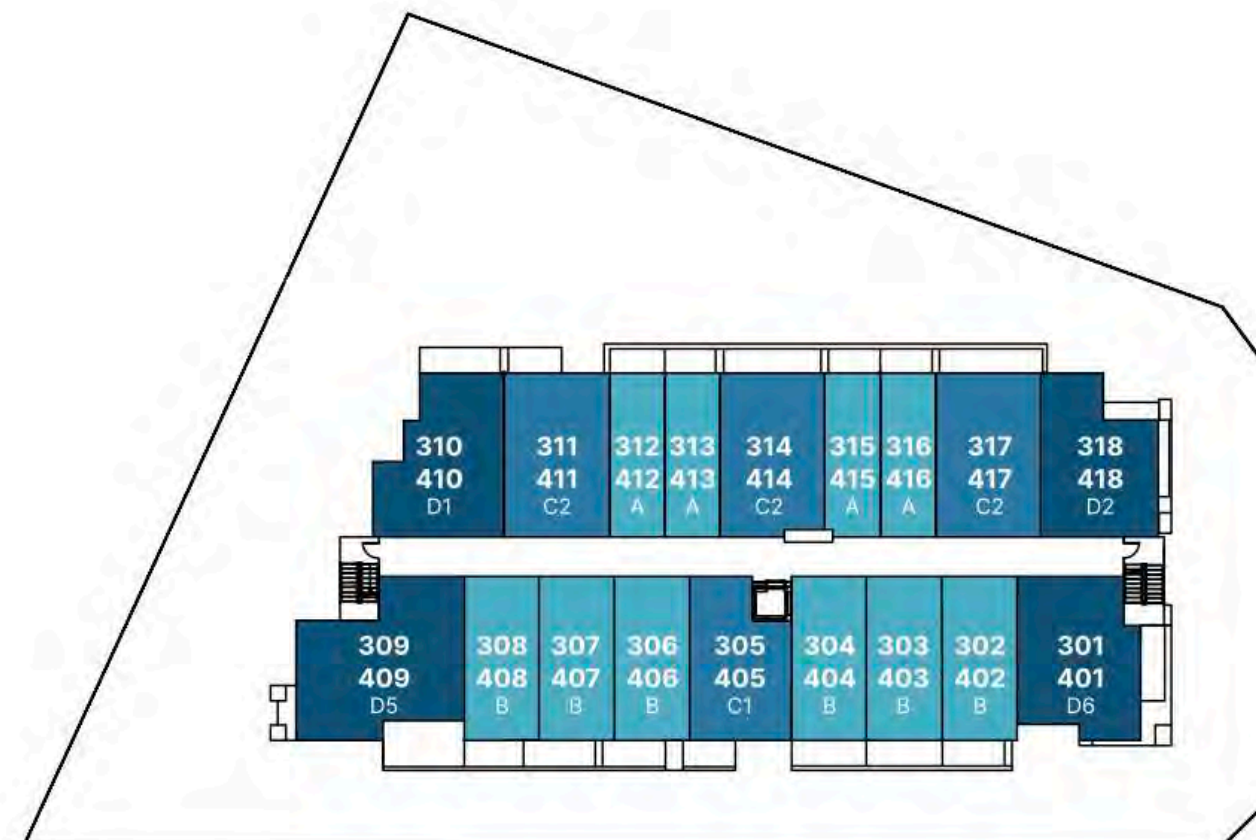
3 BEDROOM



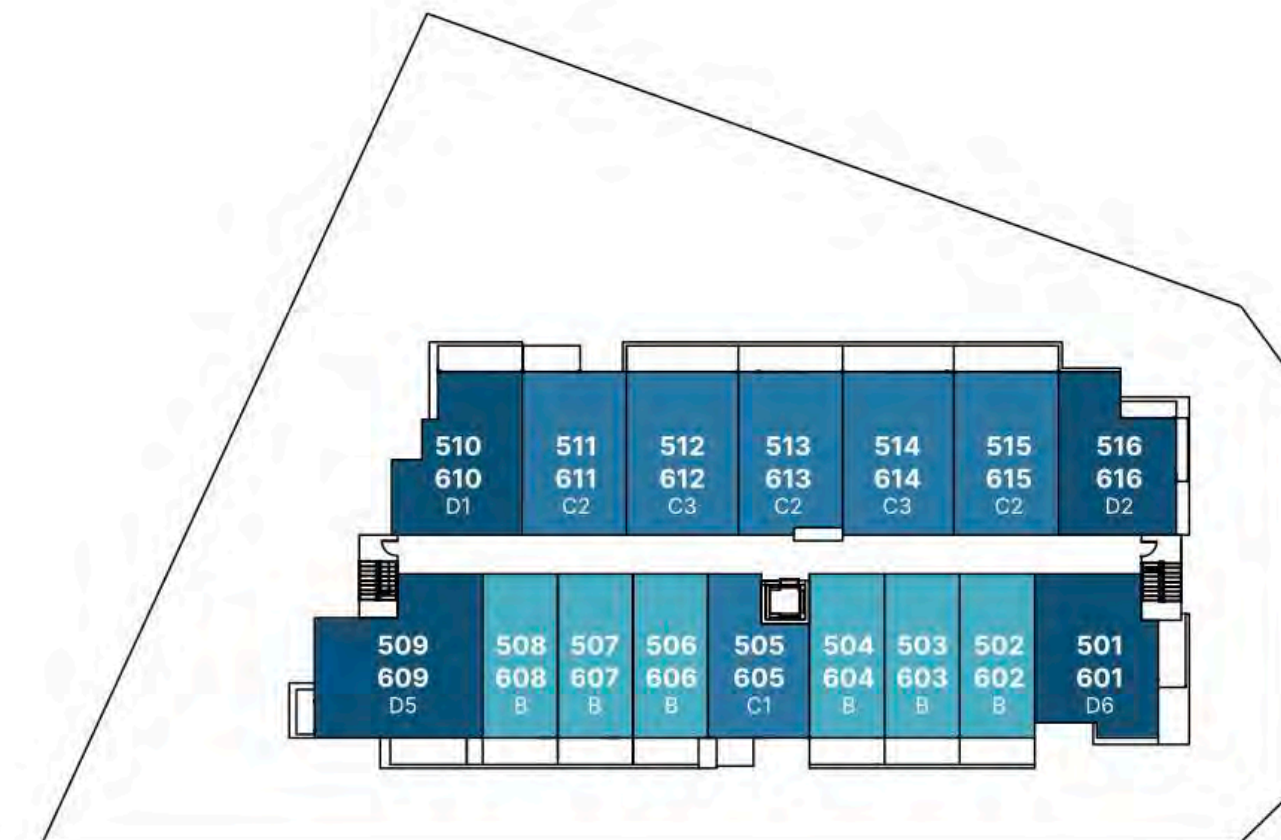
GROUND FLOOR



2 FLOOR



3-4 FLOOR



5-6 FLOOR



The Anacapri

Jeff Anderson
Sales Manager
604-837-8112



This is not an offering for sale. Any such offering can only be made with a Disclosure Statement. All renderings and images in this brochure are artists representations only. Developer reserves the right to change or make modifications to the design, specifications and prices without notice. E.&O.E.